

Phone Numbers

EHS Hazardous Materials 785-864-2853
EHS Emergency Pager 785-838-7421
KU Public Safety 785-864-5900
Emergency! 911

More Info

www.ehs.ku.edu

Spill Kit Inventory & Instructions

Your spill kit should consist of:

- 1 five-gallon screw-top bucket
- 1 48" mini-boom (the long, skinny sorbent)
- 2 sorbent pillows
- 10 sorbent pads
- 2 trash bags
- 2 pairs of nitrile gloves

If any items are missing or have been used, contact EHS to have them replenished.



In the event of a spill...

Remain calm, move away from the spill, and ask other lab personnel for help. If anyone has been injured remove them and any personnel who may be affected from the area. If necessary, get them to the eyewash or safety shower and call 911.

Is there an immediate threat to life or health? If so, clear the area.

- Pull fire alarm to evacuate building and call 911
- Call EHS Emergency Pager at 838-7421
(Enter your call-back phone number and hit the # sign)
- Report to responding emergency personnel (Police, Fire, EHS)

If the spill generates flammable vapor, **extinguish possible ignition sources** if safe to do so.

Do not open windows as this may draw fumes further into the building.

Consult the Material Safety Data Sheet (**MSDS**) for guidance.

Can you clean the spill?

Do you have sufficient:

- equipment to protect you from the hazards of the spill?
- materials and absorbents to clean the spill?
- training to make the above determinations?
- training to clean the spill safely?

If you answered "no" to any of the above questions, do not attempt to clean the spill without seeking assistance from EHS.

- Call EHS Emergency Pager at 838-7421
- If possible, use items in the spill kit to prevent the spill from spreading or reaching floor drains before EHS arrives.

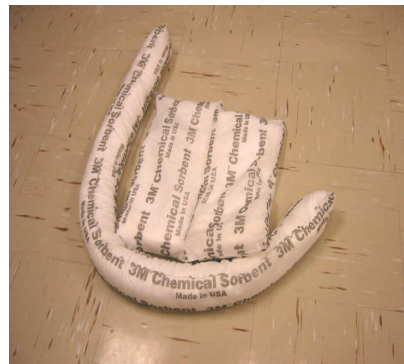
Spill Response Guidelines



Liquid chemical spill. Put on appropriate personal protective equipment (PPE).



Use the mini-boom to block the spill from spreading under furniture or into floor drains.



Place sorbent pillows on top of spill to absorb the chemical.



Wipe up the spill area with remaining sorbent pads.



Line the 5-gallon bucket with the trash bag and put all of the used clean-up material inside.



Close the trash bag and the bucket. Attach a completed Hazardous Materials label and contact EHS for pickup and replacement.